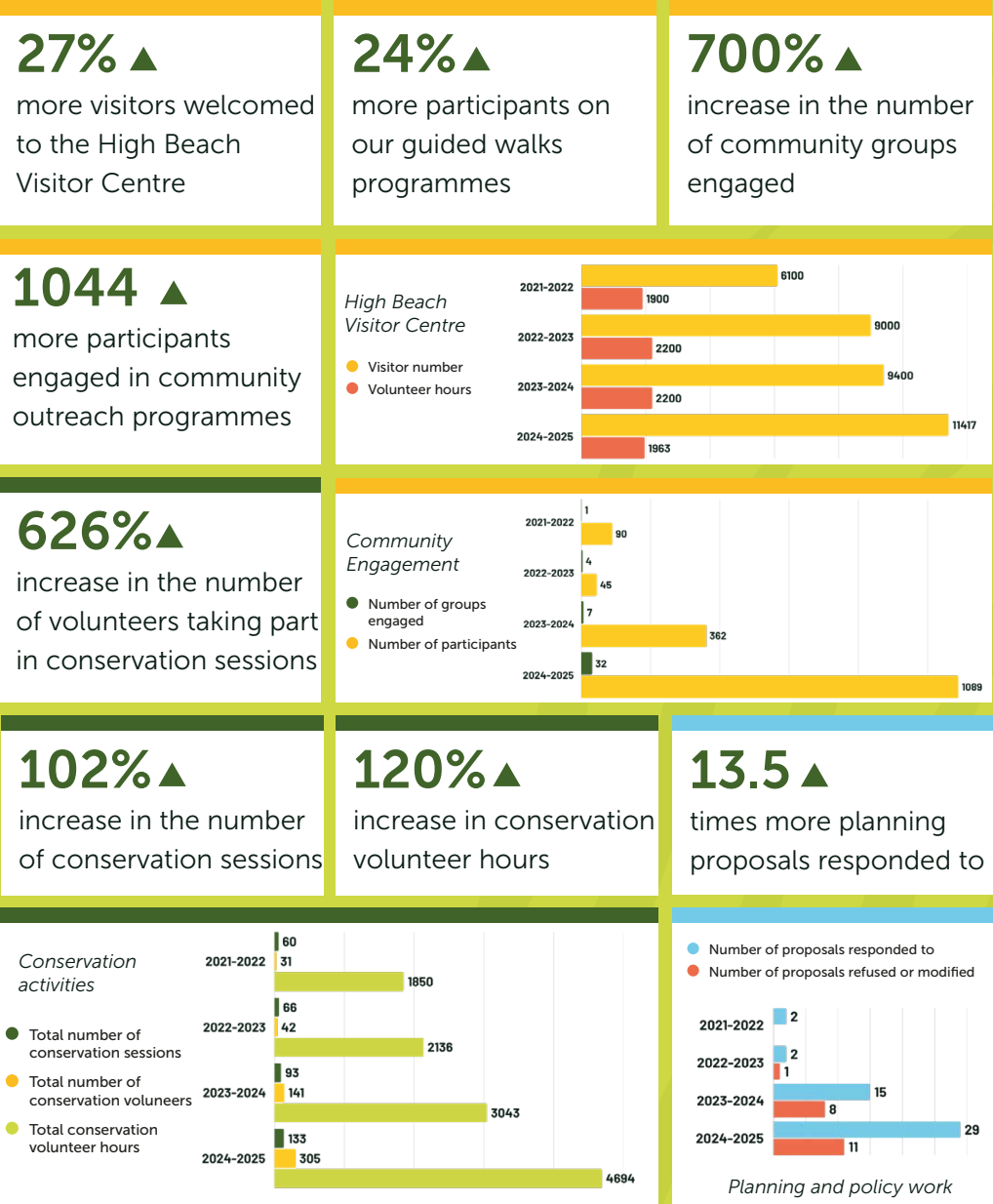


Our impact 2022-2025: highlights

Thank you for your love for the Forest. With your help, together, we delivered the following increases in impact over the past three years!



From partners and participants

It was so fun being out in nature doing something physical with a nice bunch of people. It was really satisfying work (even for a beginner!) and a good feeling knowing you're doing something to help biodiversity in the Forest.

-Sarah, Conservation volunteer

"Skilfully led with great knowledge of the Forest, very caring and considerate volunteers keeping us all together, so I could relax and thoroughly enjoy the night walk."

-Guided Walk attendee

"Our collaborative activity with the Epping Forest Heritage Trust (EFHT) provided an exceptional opportunity for our Chinese women and LGBTQ+ community members to connect with nature and participate in the conservation process. Not only did we gain specific conservation knowledge and skills, but we also learned about the history of Epping Forest. We deeply appreciate the work of EFHT and their efforts to make nature more accessible to marginalised groups."

-LeiLei, VaChina Group

"As proud Londoners, we are honoured to partner with the Epping Forest Heritage Trust (EFHT). We hope this partnership resonates not only with our customers but with other companies, and Londoners alike. Together, let's preserve the present and inspire action to ensure a healthy planet for generations to capture memories in."

-Photomart, EFHT Business Partner

"It really was a pleasure and in fact an honour to walk for the Forest. It felt something to give back for all that has been given to me from the magical land over the years. It's a day I'll remember very fondly."

-Emily, Big Walk Fundraiser



A message from our Chair

I was privileged to take on the role of Chair earlier this year, and I am delighted now to report not only on our achievements over the last year, but also on our growth in impact over the last 3 years.

And I would first like to thank all of our members, donors, partners, funders, volunteers, fellow Trustees and staff for your huge commitment to protecting and preserving this very special ancient Forest. **Together we have done so much.**

- In particular I would like to highlight:
- The genuinely transformational growth in the number of people we have welcomed to the Forest
 - The doubling of our conservation activities and the number of individual volunteers engaged
 - Our increased policy and planning work, reaching out to, and gaining the support of, local and regional politicians, as well as responding to planning proposals which



would have an adverse impact on the Forest.

At the same time the Forest is still facing its biggest challenges in a generation: climate change, pollution, increased footfall, which will only be exacerbated by the high levels of adjacent development planned over the next few years. **There is a lot more we need to do.**

That is why we have developed a new strategy for 2025-2030, focused on building on our achievements over the last 3 years, and aiming to invest in more policy, advocacy and campaigning work to better defend the Forest from the threats it faces.

Thank you so much for your support for the Forest over the last 3 years, and I hope we can count on your continued support in the years to come.

James Harrington
Chair

Our impact 2024-2025

The support of EFHT members, supporters, partners, funders and volunteers is vital in protecting and preserving Epping Forest. We'd like to say a big thank you for your love of the Forest, and share some of the highlights of our achievements together over 2024-2025. We:

Inspire	<ul style="list-style-type: none">• Welcomed over 11,000 people to the Forest through the Visitor Centre at High Beach• Guided over 470 people on our free monthly guided walks programme, sharing insight about the Forest's ecology, heritage and culture• Led 150 people on the Epping Forest Big Walk, with support from the City of London Corporation, a range of local politicians and local organisations, and with talks about the Forest along the route• Led successful partnership walks with Muslim Hikers, Black Girls Hike and 30 other community organisations, introducing 1,089 new people to the Forest
Conserve	<ul style="list-style-type: none">• 282 individual volunteers took part in 97 hands-on conservation sessions, delivering 3,053 hours of conservation activity to improve the biodiversity of the Forest• Our team of people with learning disabilities, the Happy Loppers, undertook 36 conservations sessions involving 23 people and delivered 1,641 hours of volunteer time
Protect	<ul style="list-style-type: none">• Responded to 29 planning proposals, contributing to the refusal of 11 and changes to conditions on a further application• 11 elected Councillors in Epping Forest District Council pledged to protect and preserve the Forest



The Net Promoter Score (NPS) of our hands on conservation volunteering sessions was **92**. This means that participants are extremely satisfied and are very likely to recommend taking part to friends and family.

Image credits. 1. Epping Forest Big Walk 2024 © Black Daffodil Photography. 2. James Harrington, Chair of Epping Forest Heritage Trust. 3. Muslim Hikers Epping Forest Walk 2024 © Kadeer Ali



Our impact 2024-2025

Huge thanks to our amazing volunteers:

Last year, **376** volunteers contributed over **8,000** hours of volunteer time! Including:

- **1,962** hours of time welcoming people to the Forest at the Visitor Centre at High Beach
- **534** hours to our free guided walks programme and community engagement support
- **4,694** hours to our hands-on conservation activities
- **635** hours to our policy and planning work.

We are very grateful to:

Our funders:

City Bridge Foundation, Garfield Weston Foundation, D'Oyly Carte Charitable Trust, Baily Thomas Charitable Fund, The Big Give, NLCF Awards for All, Postcode Places Trust, Essex County Council Locality Fund, City of London Central Grants Programme, The Swire Charitable Trust, The Nineveh Charitable Trust, Loughton Town Council, The Cobb Charity, Haslers Foundation, and ShareGift



Our Business Partners:

JJNet, Photomart, The Royal Forest, Attwaters Jameson Hill Solicitors, The Outspire, Colour Flow Active, The Stow Brothers

